

CellTech

metals

Innovative Panel Technology



Content



"CellTech is a revolutionary material for the trailer industry."

Chris Lee VP-R&D, Engineering



3 About the Company

4 Introduction

6 Milestones

7 Our Technology

8 Product Portfolio

11 Applications

12 CellTech Case Studies

14 CellTech Testing

18 CellTech Cargo Trailers

22 Connect with Us



About the Company

- ▶ Lightweight Sandwich Panel Technology
- ▶ Transportation Industry Applications

Introduction

Lightweight Sandwich Panel Technology

CellTech Metals is a lightweight sandwich metal company offering the most advanced solutions in metal technology. Established in 2005, CellTech has advanced its technology through strategic partnerships with experts in adhesives, manufacturing processes, and precision tooling design. We offer complete customization of sandwich metal products to not only meet your design needs but also provides you with cost and weight savings.



Key Management

Developing Panel Technology
Since 2005



Doug Cox
Chief Executive Officer



Fabien Ebnoether
Chief Engineer

Our Milestones

CellTech's Exploration of Panel Technology

2005

Founded by Doug Cox as an initiative to provide affordable Honeycomb solution

2010

PHD Engineer Fabien Ebnoether develops a unique bi-directional corrugated design -CellTech's patented technology

2012

Manufacturing equipment was designed to mass produce CellTech technology

2013

1st Commercialized Product- CellTech Panel, testing began with Hyundai

2018

CellTech Metals began manufacturing & Selling their Patented technology in Searcy, AR for XPO & TMI

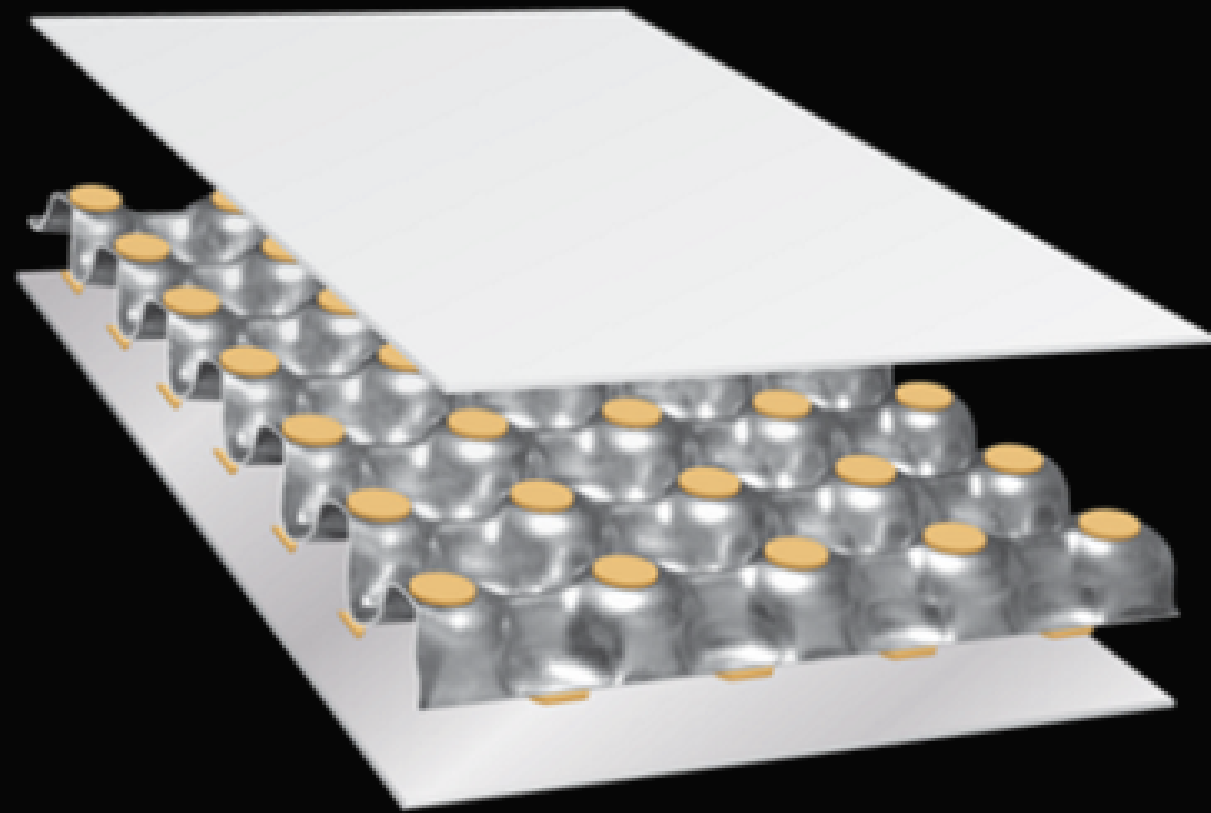
2020

CellTech Metals relocates plant to Waco, TX to begin partnership with Forest River

2022

CellTech Trailers LLC is formed

Our Technology

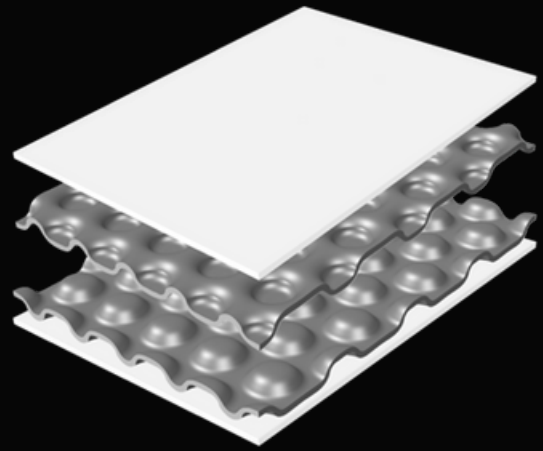


Patented

Sandwich Panel Technology

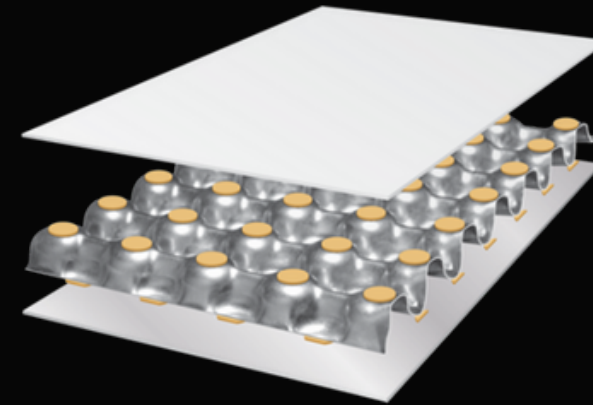
A patented breathable, bi-directional open-cell design which creates opportunities for a variety of enhancements; acoustic, structure, thermal, air-flow, etc.

Product Portfolio



CellTech® Sheet

- 4 metal layers
 - Thin sandwich material
 - Brazing or adhesive
 - Excellent formability
 - Substitute for sheet metal
-



CellTech® Panel

- 3 metal layers
 - Thick sandwich material
 - Adhesive
 - Limited formability
 - Used as flat panel
-





CellTech® Panel

High bending stiffness to weight ratio

Cost-efficient mass production

Ability to use low cost galvanized steel sheets

Bonding with a high-performance aerospace grade structural adhesive

Customizable E-Track System

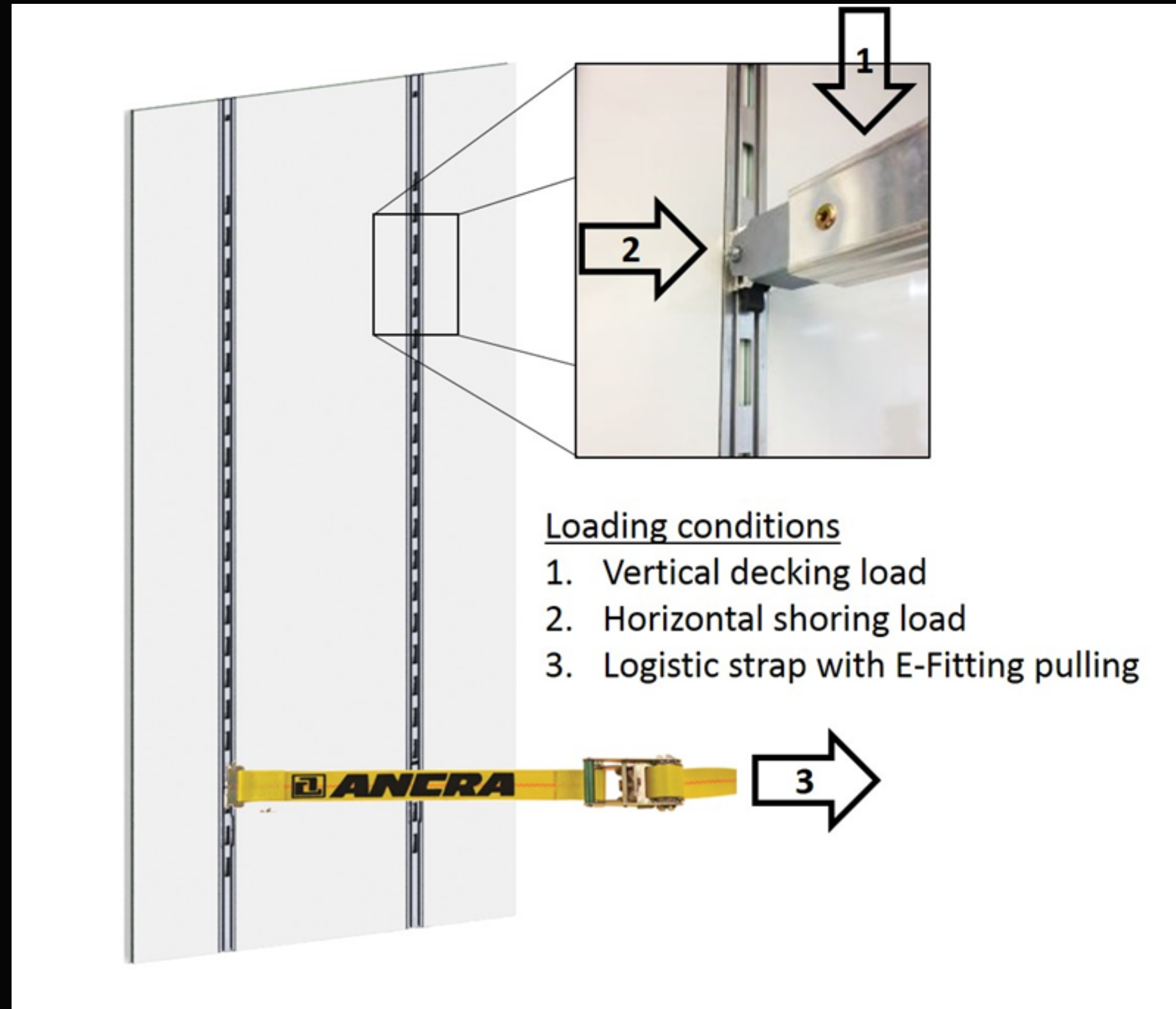
Numerous Industrial Cargo Applications

Engineered for sustainability & 100% Recyclable



CellTech® Track System

Integrated ANCRA LADII System



Applications

Industries of Focus



Transportation



Construction



Elevator

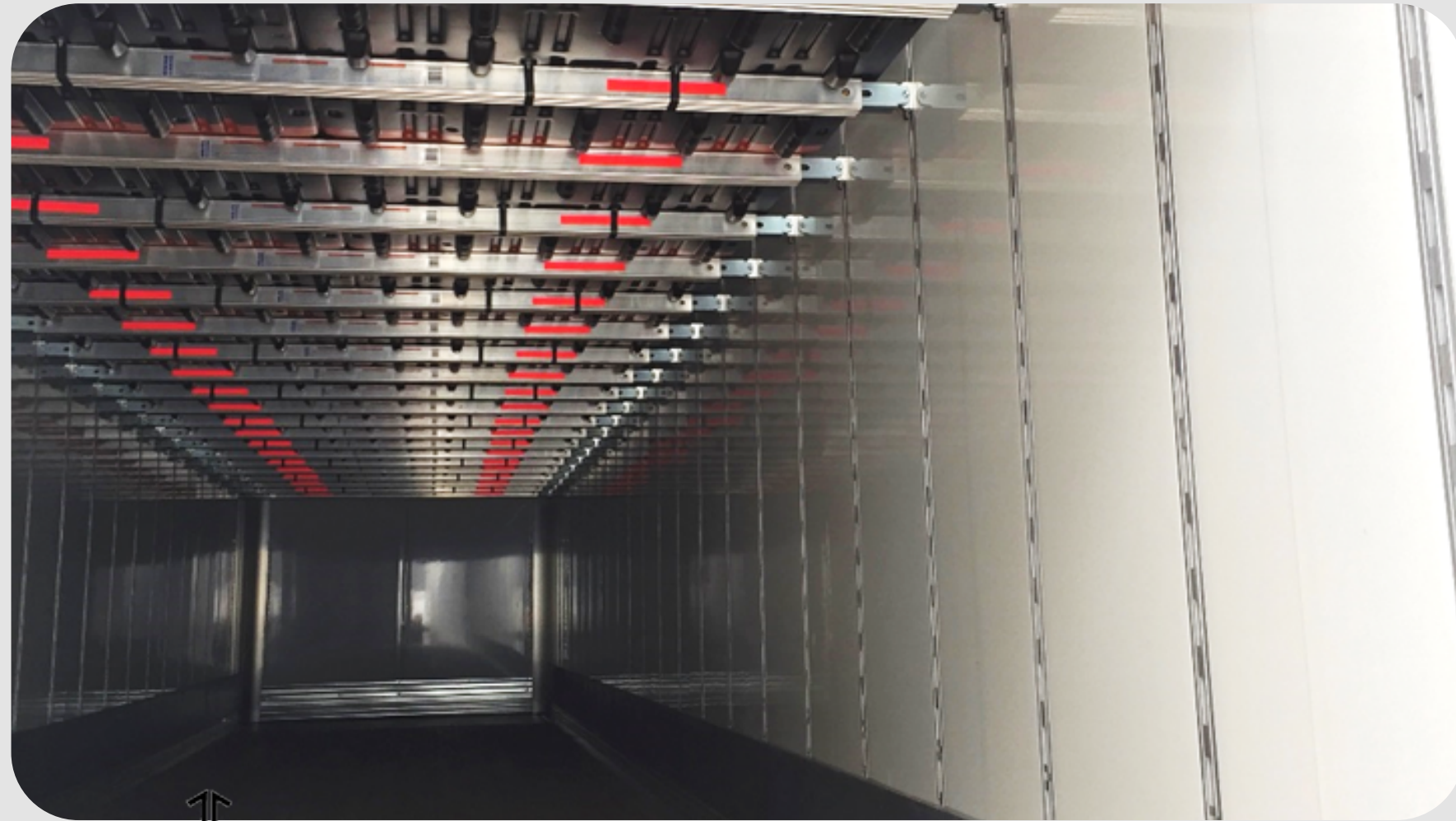
Semi Trailer Case Study

Exterior CellTech Panel vs. Composite



Semi Trailer Case Study

Interior CellTech Panel vs. Composite

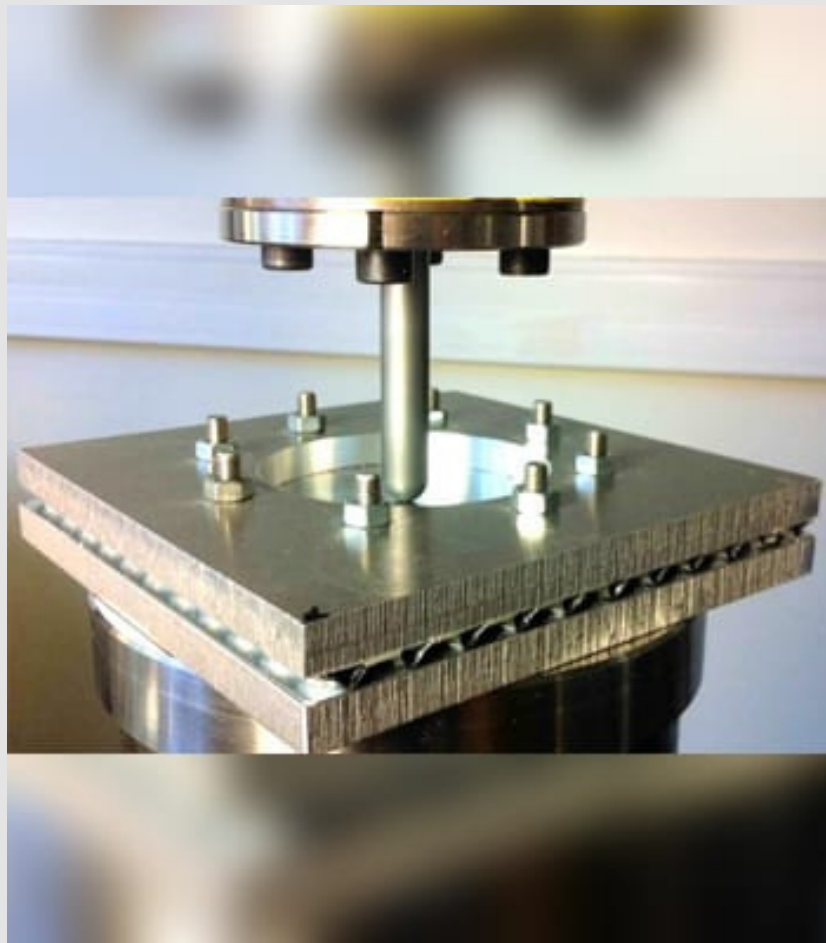


Standard

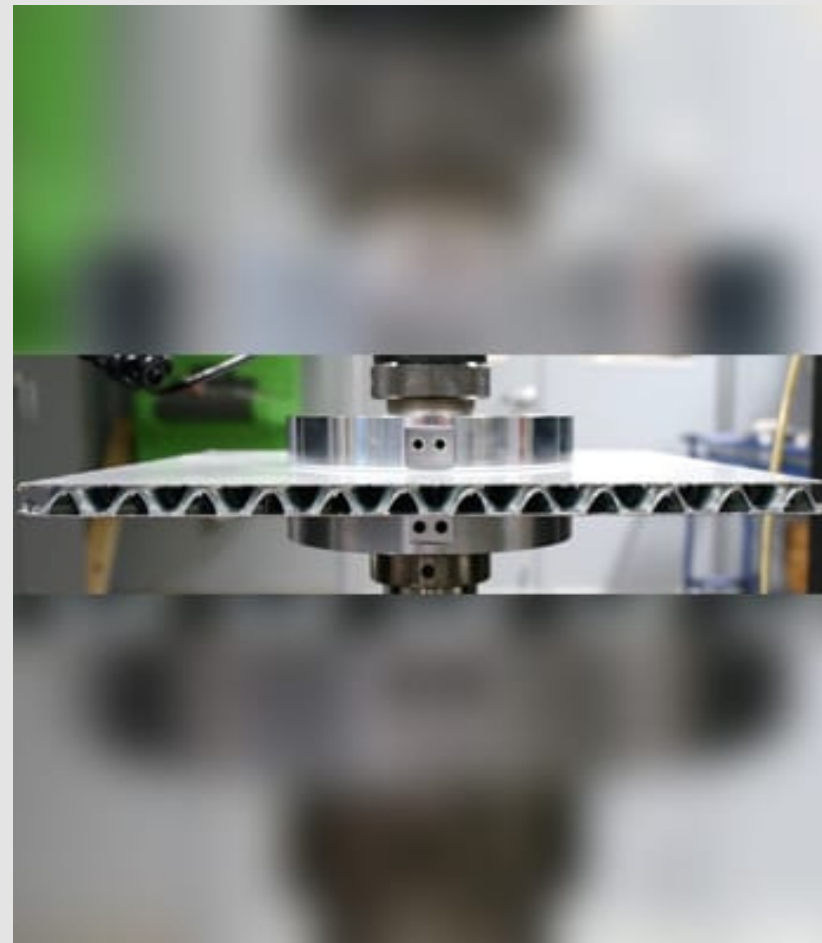


CellTech Testing

Mechanical Properties



PUNCTURE/DENT TESTS



COMPRESSION TESTS



BENDING TESTS



PEEL TESTS

CellTech Testing

Mechanical Properties

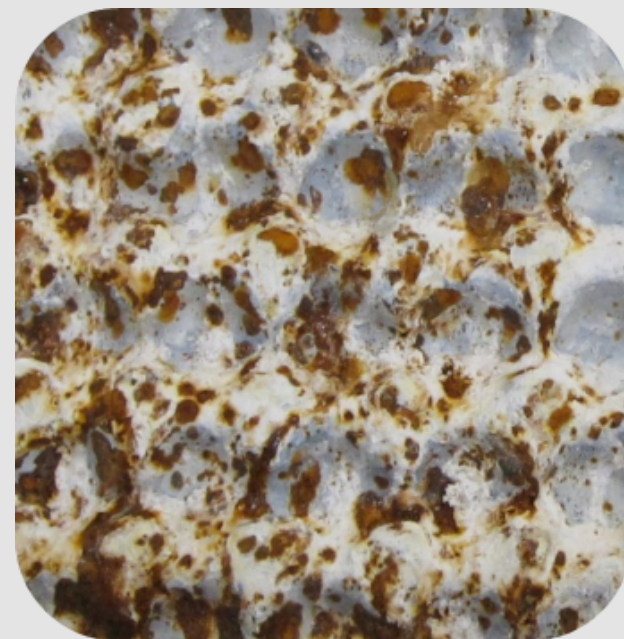
Galvanized Steel G90

G90+ corrosion protection system

Initial



**1,000 hrs. Salt
Spray
(ASTM B117)**



CellTech Testing- Validated & Road Tested

- **Whiting Doors** – has over 20,000 CellTech panel rear swing doors that have been on 53' van trailers since 2014 – no issues
- **Hyundai Translead** – built ten 53' vans that have been on the road since 2013 – no issues
- **XPO Logistics**– Since 2015 LTL trailers have been built with extensive daily use – no issues
- **TMI** – since 2016 over 1000 adhesively bonded 53'vans and truck bodies on Mexican roads – no issues
- **CellTech Cargo Trailers**- since 2018 over 2000 cargo trailers on the road- no issues



CellTech
TRAILERS

Product Portfolio

CellTech® Cargo Trailer

- Increased Strength – An all steel trailer using CellTech's revolutionary panel technology. CellTech panels are manufactured with a patented technology engineered for the enclosed cargo trailer
 - Weight Savings - The weight savings is created by the unique bi-directional panel core structure, whereby an air flow wall structure has been developed to reduce weight.
 - **Aesthetics** – Due the stiffness of the walls and roof design, the trailer is very aesthetically attractive
 - Cargo – The walls and roof panels been designed with e tracks to carry significant loads and help manage and organize; equipment, tools and materials.
-



Key Features



Lightest ALL STEEL Trailer

Toughness & Longevity

Strength & Durability

E-Track Cargo Solutions

Increased Cargo Cube Space

Significant Wall Loading Capabilites

Outstanding Aesthetic Appearance

Aerodynamic Wall & Roof System

100% Recyclable

CellTech trailer survives flip on icy highway!

Would your aluminum
trailer hold up like this after
flipping on the highway?

<https://youtu.be/JIbC4RfLoLc>





Connect with us.

Email

dcox@celltechmetals.com

Website:

www.celltechmetals.com

www.celltech-trailer.com

Call us

858-414-5373

